

RV-10 Cowl Pin Covers

Important Notice: This manual contains important information that may affect the safety of your aircraft. Read the Warranty / Agreement below. There is information in the Warranty / Agreement that may alter your decision to install this product. **If you do not accept the terms of the Warranty / Agreement, do not install this product.** The product may be returned for a refund if you do not accept the terms of the Limited Warranty / Agreement.

Aerosport Products is not liable or responsible for a builder's action or any situation that results in personal injury, property damage, missed commitments, lack of use of an aircraft or any expenses incurred due to: product failure, installation issues (leaks, obstructions, damage to aircraft or components, incorrect installation of any parts, wrong parts, parts that don't fit, etc.) or any other issues related to the installation or operation of this product. All of the above are solely the builder's and/or installer's responsibility. By installing this product, the aircraft owner/pilot and installer agree to hold Aerosport Products harmless and in no way responsible for monetary compensation, including punitive damages for any incident, harm and/or damage associated with this product (including but not limited to the ones listed above). If you do not agree to the above, **DO NOT INSTALL THIS PRODUCT.**

If you do not have the skills, knowledge, tools, equipment or facility, to perform and determine the installation of this product is safe, reliable and accurate and to determine this product is operating properly after installation, **DO NOT INSTALL THIS PRODUCT.** If the owner/pilot and/or installer are unwilling to take the responsibility for the installation and operation of this product, **DO NOT INSTALL THIS PRODUCT.** This product may be returned for a refund by contacting Aerosport Products. Shipping charges are not refundable.

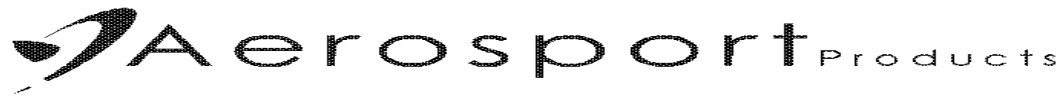
Before starting the installation, make sure that your planned installation will not interfere with the proper operation of any controls. The installer should use current aircraft standards and practices to install this product. Refer to AC 43.13-2A, Acceptable Methods, Techniques, and Practices - Aircraft Alterations and AC 43.13-1B, Acceptable Methods, Techniques, and Practices--Aircraft Inspection and Repair. The RV-10 Cowl Pin Covers are limited to use in experimental aircraft. Not approved for use in aircraft with FAA or foreign type certificates.

LIMITED WARRANTY / AGREEMENT Aerosport Products warrants its products to be free from defects in materials and workmanship for a period of one year after the retail invoice date. Aerosport Products will repair or replace any components under the terms of this Warranty provided the item is returned to Aerosport Products prepaid. This Warranty shall not apply to any unit or component that has been repaired or altered by any person other than Aerosport Products or that has been subjected to misuse, abuse, accident, , or improper or unprofessional installation by any person. THIS WARRANTY DOES NOT COVER ANY REIMBURSEMENT FOR ANYONE'S TIME FOR INSTALLATION, REMOVAL, ASSEMBLY OR REPAIR. Aerosport Products reserves the right to determine the reason or cause for warranty repair.

1. This Warranty does not extend to any aircraft or any other device to which the Aerosport Products system may be connected, attached, or used with in any way.

2. THE REMEDIES AVAILABLE TO THE PURCHASER ARE LIMITED TO REPAIR, REPLACEMENT, OR REFUND OF THE PURCHASE PRICE OF THE PRODUCT, AT THE SOLE DISCRETION OF AEROSPORT PRODUCTS. CONSEQUENTIAL DAMAGES, SUCH AS DAMAGE TO THE AIRCRAFT, ARE NOT COVERED, AND ARE EXCLUDED. DAMAGES FOR PHYSICAL INJURY TO PERSON OR PROPERTY ARE NOT COVERED, AND ARE EXCLUDED.

3. Aerosport Products is not liable for expenses incurred by the purchaser or installer due to Aerosport Products updates, modifications, improvements, upgrades, changes, notices or alterations to the product.



4. Aerosport Products is not responsible for shipping charges or damages incurred during Shipment, except for situations where the system fails away from the aircraft's home base and the pilot is unable to safely fly the aircraft, at which time Aerosport Products shall, at Aerosport Products' sole discretion, pay only one-way shipping charges to the purchaser (US 48 states only).

5. No one is authorized to assume any other or additional liability for Aerosport Products in connection with the sale of Aerosport Products units.

6. By purchasing these products from Aerosport Products, the Purchaser agrees that he/she will not copy, reverse engineer, modify use to make molds or otherwise attempt to use the purchased products design / functionality to develop a competing product

7. IF YOU DO NOT AGREE TO ACCEPT THE TERMS OF THIS AGREEMENT, YOU MAY RETURN THE PRODUCT FOR A FULL REFUND. IF YOU DO NOT AGREE TO ACCEPT THE TERMS OF THIS WARRANTY, **DO NOT INSTALL THE PRODUCT.**

8. This warranty is made only to the original purchaser and is not transferable. THIS WARRANTY IS IN LIEU OF ALL OTHER WARRANTIES OR OBLIGATIONS, EXPRESS OR IMPLIED, ORAL OR WRITTEN. AEROSPORT PRODUCTS EXPRESSLY DISCLAIMS ALL IMPLIED WARRANTIES OF MERCHANTABILITY OR FITNESS FOR A PARTICULAR PURPOSE. THE PURCHASER AGREES THAT IN NO EVENT SHALL AEROSPORT PRODUCTS BE LIABLE FOR SPECIAL, INCIDENTAL OR CONSEQUENTIAL DAMAGES, INCLUDING DAMAGES TO THE ENGINE OR AIRCRAFT, LOST PROFITS, LOSS OF USE, OR OTHER ECONOMIC LOSS. EXCEPT AS EXPRESSLY PROVIDED HEREIN, AEROSPORT PRODUCTS DISCLAIMS ALL OTHER LIABILITY TO THE PURCHASER OR ANY OTHER PERSON IN CONNECTION WITH THE USE OR PERFORMANCE OF AEROSPORT PRODUCTS UNITS, INCLUDING BUT NOT LIMITED TO STRICT PRODUCTS LIABILITY IN TORT.

What's included:

In the cowl pin cover kit you received a right and left emblem blank and a right and left emblem polished cover. They should be marked but you can tell them by the thicker end is the front. You will want to use the blanks to do all your set up. They are slightly oversized and will accommodate for paint thickness once you paint your aircraft.

What you need to supply:

Nutplates, screws, and rivets are not included because they may vary with each builder's installation and preferences. We will provide suggestions in the instructions, but each builder will need to determine the appropriate hardware for their installation per AC 43.13.

Installation Instructions

Step #1

Blanks are supplied in the kit to use duration the installation process. These serve a dual purpose. The first is not to damage or scratch the RV-10 emblems. The second is that the blank is slight oversized to allow for paint. This will give a perfect finish once your cowl has been finished and is painted.

Put a straight edge along spinner ring in Figure #1 and Figure #2. Measure back to the side of the cowl as shown. This will be the front location for each cover. Then center the emblem on the cowl hinge line as Figure #3.

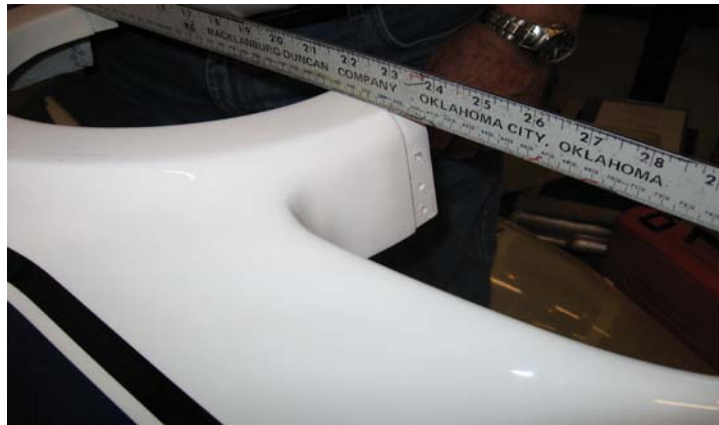


Figure 1

(Left side) Measure down 2" from the straight edge and make a mark for the front edge of the left side.



Figure 2

Repeat on the right side 1.35 inches

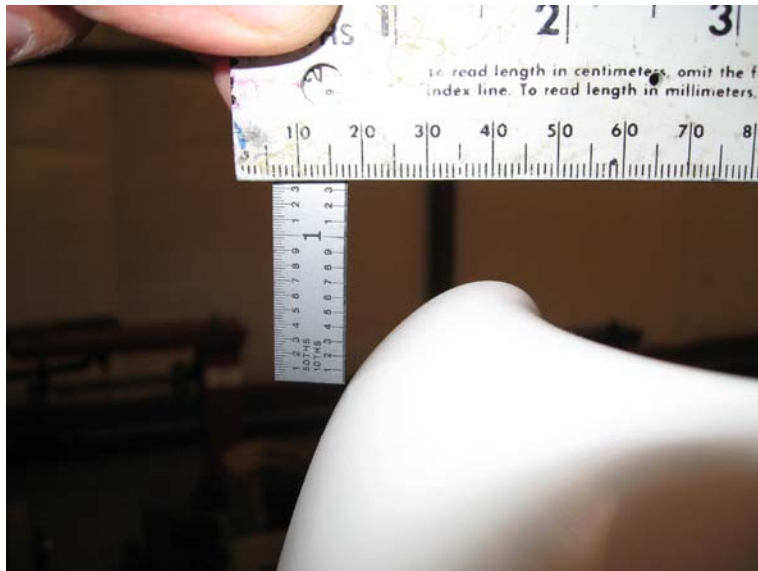


Figure 3

Step #2

Fasten the top and bottom cowl pieces together and align the front of the blank emblem with marks made in the previous step and center on the cowl horizontal joint line. Draw or scribe a line around the emblem on both the top and bottom cowl parts.

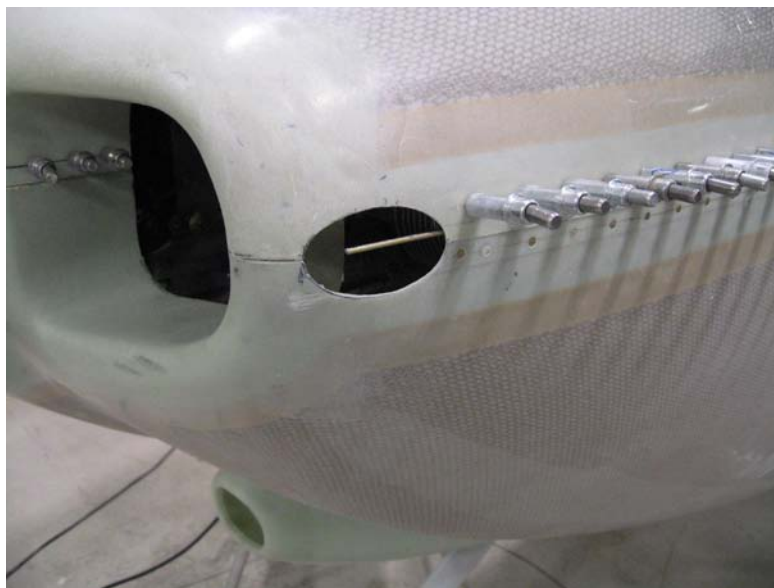


Figure 4

Step #3

Keep cowl halves together and cut out the hole so the blank emblem fits in just snug. Take your time and do a little at a time. Keep taking little amounts off until the emblem is just touching the cowl halves.

Step #4

Once you are happy with the fit put two coats of wax on just the backside of each blank emblem. Align the blank emblems to the cowl outside skins as best you can. Tape them on to the cowl halves to hold them in position. These emblems have been cut to match the outside of the skins as best possible. They might not fit perfect but will be very close. Once you have them where you want them make a little epoxy paste and brush that on the back side where you will be laying the fiberglass. This will help fill little voids and will make a better fit and finish when done.

Apply a slurry of epoxy resin and micro balloons, or other light filler, around the inside of the cowl halves. There will be a little step between the cowl inside skin and the emblem. It should not take much. Let that cure until tacky. Then apply four layers of 6 oz. fiberglass cloth or equivalent to the backside of the emblems and each cowl half. Overlap the glass at least one inch on each cowl half. Repeat on the other side. Let cure.



Figure 5

Step #5

Do not remove the emblems yet. Drill holes thru emblem attach holes and fiberglass using a #27 bit to mark the 6-32 screw holes. Cut through the fiberglass on centerline to separate the cowl halves. Take the cowl halves apart and knock the emblems out. Trim as necessary and install K-1000-06 nut plates.



Figure 6



Figure 7

If you have any questions about your installation, please give us a call or send an email.